



### General Features

- ◆ Sealed and maintenance free operation.
- ◆ Non-Spillable construction design.
- ◆ ABS containers and covers(UL94HB, UL94V-0) optional.
- ◆ Safety valve installation for explosion proof.
- ◆ High quality and high reliability.
- ◆ Exceptional deep discharge recovery performance.
- ◆ Low self discharge characteristic.
- ◆ Flexibility design for multiple install positions.



Battery Type	Valve-Regulated,Absorbed Glass Mat(AGM) Technology			
Nominal Voltage	12V			
Capacity( 20°C)	20HR(2.34A,1.8V/cell)	10HR(4.37A,1.80V)	5HR(7.52A,1.75V)	1HR(26.5A,1.60V)
	46.8AH	43.7AH	37.6AH	26.5AH
Dimensions	Length	Width	Height	Total Height
	197mm(7.76inches)	165mm(6.50inches)	170mm(6.69inches)	170mm(6.69inches)
Approx Weight	Approx 14.5 kg (32.0lbs)			
Internal Resistance	Full Charged at 20°C: Approx 9.0m Ω			
Self Discharge	3% of capacity declined per month at 20°C			
Capacity affected by Temperature (10HR)	40°C	25°C	0°C	-15°C
	103%	100%	86%	65%
Charging Voltage (V)	Cycle use		Float use	
	14.4V~15.0V at 25 °C. T emp. Coefficient -30mV/ °C		13.5V~13.8V at 25 °C.Temp. Coefficient (-20mV/ °C)	
Current	Max. Discharge Current		Initial Charging Current	
	540A(5s)		Less than 13.5A	
Operating T emp.Range	Discharge		Charging	Storage
	-15~50°C (5 ~122°F)		0~40°C (32 ~104°F)	-15 ~40°C (5 ~104°F)

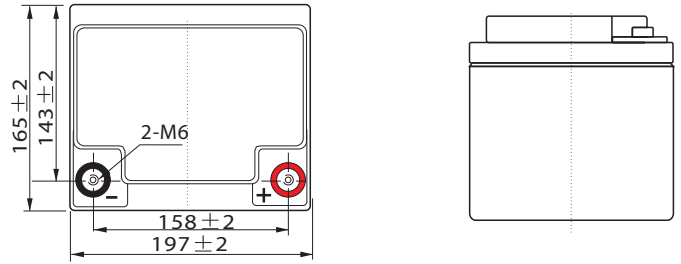
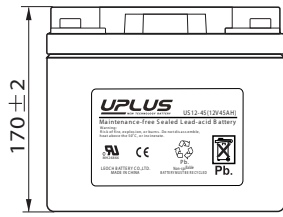
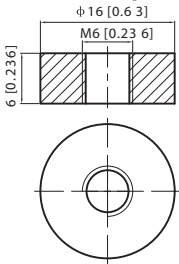
Constant Current Discharge (Amperes) at 20 °C (68°F)														
F.V/Time	10min	15min	20min	30min	45min	1h	2h	3h	4h	5h	6h	8h	10h	20h
1.85V/cell	50.0	42.1	37.3	31.0	23.9	20.4	13.4	10.1	8.24	6.93	6.13	4.92	4.23	2.26
1.80V/cell	57.2	47.2	41.3	33.6	25.8	21.6	14.4	10.8	8.75	7.34	6.50	5.18	4.37	2.34
1.75V/cell	65.0	53.2	45.6	36.5	28.1	23.5	14.9	11.2	9.06	7.52	6.70	5.35	4.48	2.39
1.70V/cell	73.4	59.1	50.3	39.9	30.3	24.9	15.7	11.8	9.46	7.95	7.02	5.58	4.65	2.46
1.65V/cell	78.8	63.2	53.5	42.1	32.0	25.7	16.3	12.3	9.83	8.20	7.27	5.77	4.78	2.53
1.60V/cell	86.7	69.3	58.2	44.9	33.3	26.5	16.7	12.6	10.1	8.40	7.42	5.87	4.89	2.57

Constant Power Discharge (Watts) at 20 °C (68°F)														
F.V/Time	10min	15min	20min	30min	45min	1h	2h	3h	4h	5h	6h	8h	10h	20h
1.85V/cell	93.4	79.3	71.1	59.6	46.4	39.8	26.2	19.8	16.3	13.7	12.2	9.81	8.46	4.52
1.80V/cell	105.6	87.9	77.5	63.8	49.7	41.8	28.0	21.1	17.2	14.5	12.9	10.3	8.71	4.67
1.75V/cell	118.1	97.9	84.8	68.7	53.6	45.4	29.0	21.9	17.7	14.8	13.2	10.6	8.94	4.78
1.70V/cell	130.3	107.1	92.9	74.6	57.6	47.9	30.5	23.0	18.5	15.6	13.8	11.1	9.27	4.90
1.65V/cell	138.7	113.8	98.1	78.1	60.4	49.2	31.5	23.8	19.1	16.0	14.3	11.4	9.52	5.04
1.60V/cell	149.2	122.6	105.4	82.8	62.4	50.4	32.1	24.3	19.5	16.4	14.5	11.6	9.70	5.12

# Dimensions

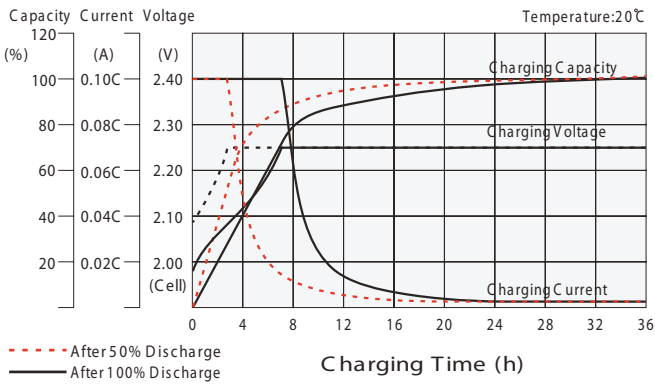
## T6 Terminal

Unit: mm [inches]

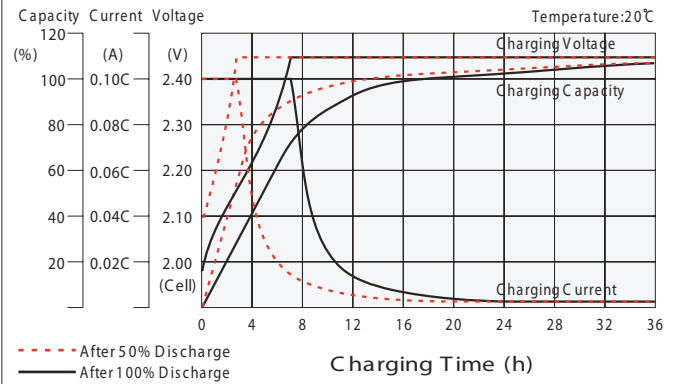


Torque: 3.9~5.4N\*M

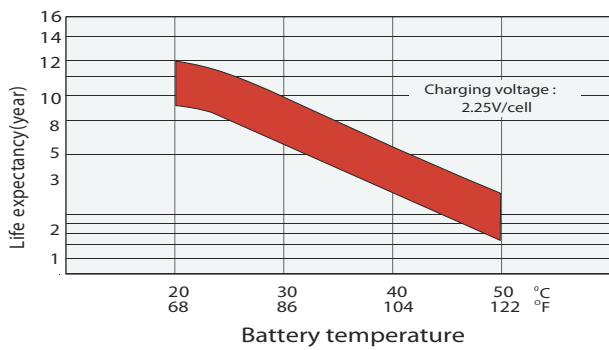
## Float charging characteristics



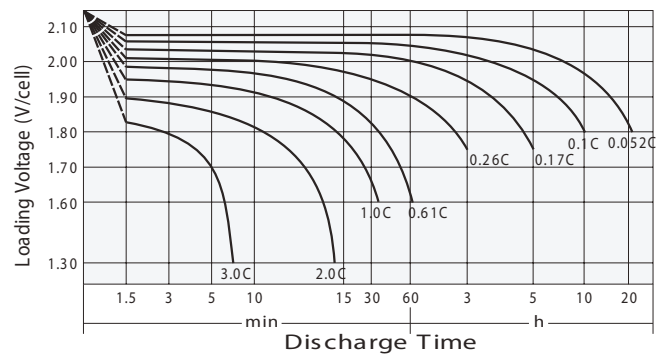
## Cycle use charging characteristics



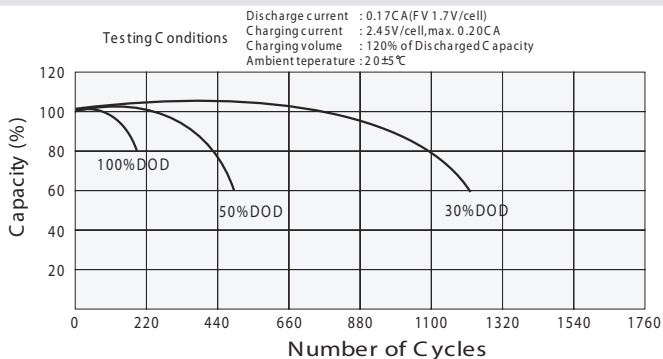
## Effect of Temperature on Long Term Float Life



## Discharge characteristics



## Cycle Life in Relation to Depth of Discharge



## Self Discharge Characteristics

